



SIDES

A challenging and equitable curriculum
that is accessible to all students and
assessments that measure real learning

MICHIGAN SALAD



Reviews from Michiganders

"We need to start looking internally to ask what does a curriculum look like that doesn't do racial harm? When we're studying history, are we perpetuating white supremacy and patriarchy in the material that we're teaching?"

"We don't realize how biased our words are, that we can belittle someone's core identity when we say the wrong pronouns. We need someone that provides those trainings [to staff]."

"Every school should have [access to a] social-emotional learning curriculum. And within that curriculum...school districts need to make sure that...communities are explicitly represented."

"Having a Queer Straight Alliance (QSA) is great. Having a separate facilitator for a QSA is great. Having separate bathrooms is great. And we also need to address violence against LGBTQ people."

CHEF'S TIP

A great salad includes fresh, diverse ingredients—students learn best when the curriculum is rigorous, culturally responsive, and prepares them for their future.

MICHIGAN SALAD:

RELEVANT, RIGOROUS, ANTIRACIST, AND INCLUSIVE CURRICULUM FOR ALL STUDENTS.

The learning curriculum — lesson plans, activities, and materials — should actively engage and support learning. Curriculum should be relevant to students and prepare them to succeed in college, careers and civic and community life. Anti-racist curriculum includes an honest history of racism in and beyond the U.S. and directly addresses white supremacy, while also including Asian, Black, Latinx, and Indigenous histories. Curriculum inclusive of gender and sexually diverse students reflects and affirms knowledge, history, and contributions of gender and sexually diverse peoples. The curriculum should align with school policies and programs that support and protect Students of Color, LGBTQ+, and other students and staff from discrimination.



INGREDIENTS

- ▶ Training on and implementation of culturally relevant, anti-racist, and LGBTQ+ inclusive curricula and pedagogies.
- ▶ Hands-on learning and classes that reflect student interests.
- ▶ Social emotional learning, asset-based frameworks and student input are included in the curriculum.
- ▶ Gender and sexual diversity is included in social emotional learning and health curricula.
- ▶ All educators and staff receive training on how to support Black students and other students of color, and anti-racist frameworks are part of teacher evaluations.
- ▶ Recruitment and support for Black teachers and teachers of color.
- ▶ Single-use bathrooms are in every classroom.

Cooking Instructions

1. Fill each salad bowl with lesson plans, activities, and materials.
2. Allow students to top with the toppings of their choice (e.g. hands-on experiences, social emotional learning, student input, inclusive relevant topics) that meet their individual needs.
3. Have well-prepared and educated teachers and staff serve.
4. Enjoy!

Sides

equitable,
accessible
curriculum and
assessments

GRANDMA'S GREEN BEAN CASSEROLE



Reviews from Michiganders

"We're interested in our students developing and growing. What we're really looking at is the success of the students and the communities that the students live in."

"I think we go back to let's trust teachers as professionals. I trust teachers to be able to assess their content areas and assess their students the best."

"Just get rid of [standardized testing]. We know it's biased by race. We know that it isn't supposed to help teachers teach. We rarely see the results, and if we do see them, it's a year later."

CHEF'S TIP

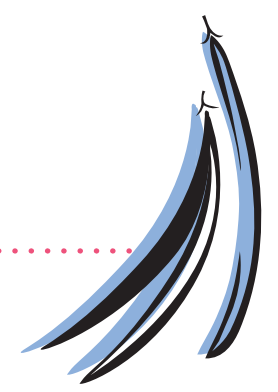
Taste-testing is key—schools should measure learning in multiple ways, ensuring assessments reflect real student progress instead of relying on outdated standardized tests.

GRANDMA'S GREEN BEAN CASSEROLE:



A MEANINGFUL AND REASONABLE ASSESSMENT AND ACCOUNTABILITY SYSTEM.

A dynamic system that measures accountability across many layers. The system should measure student learning in multiple ways, and assessments should be aligned to curriculum and instruction. The system should hold the government accountable for providing funding and learning resources to schools and students. All measures should be easy for parents and community members to understand and use.



INGREDIENTS

- Multiple measures of learning (e.g., real-world, culturally relevant, project-based learning can be used as an alternative to testing).
- Teachers receive training on how to measure learning and are included in developing and using learning measures and assessments.
- High-stakes consequences are not based on a single test.
- Teachers, parents, and students participate in accountability decisions.
- The system should hold government leaders accountable for providing funding and learning resources.



Cooking Instructions

1. Measure constant improvement and fold into an equitable educational system.
2. Add well-aligned curriculum and instruction.
3. Stir in multiple measures of learning and toss with teachers who are trained on learning assessment.
4. Be sure to add a healthy dose of government accountability.
5. Accompany with teacher, parent, and student input for a well-rounded educational experience.